



WEISSENSEE (AUT)

FIS

Women's Slalom | January 20, 2024

CODEX: 6914 | Valid for FIS Points: YES

Results

Downloads (1)

More Information

List by FIS points

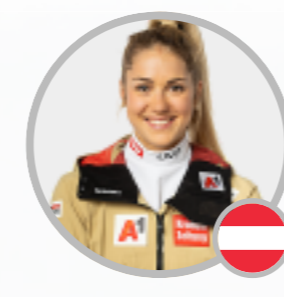
OFFICIAL RESULTS

Nation SUI,USA

Birth Year 1972,1975 or 1980-1985



1ST | **1:36.87**
MOLLIN Axelle



2ND | **+0.44**
NIEDERNDORFER Maria



3RD | **+1.45**
RODRIGUEZ ELOSEGUI Arrieta

Rank	Bib	FIS code	Athlete	Year	Nation	Run 1	Run 2	Tot. Time	Diff. Time	FIS Points
1	1	65127	MOLLIN Axelle	2001		46.24	50.63	1:36.87		23.00
2	10	56583	NIEDERNDORFER Maria	2002		47.06	50.25	1:37.31	+0.44	26.32
3	5	496491	RODRIGUEZ ELOSEGUI Arrieta	2002		47.69	50.63	1:38.32	+1.45	33.93
4	9	56530	FLATSCHER Julia	2000		47.48	50.91	1:38.39	+1.52	34.45
5	13	6296009	SINGOI Caterina	2003		48.26	50.41	1:38.67	+1.80	36.56
6	11	56601	STOCK Kathrin	2002		47.42	51.37	1:38.79	+1.92	37.47
7	6	325119	GIM Sohui	1996		47.69	51.25	1:38.94	+2.07	38.60
8	2	56679	RIEGLER Elisa	2004		47.72	51.35	1:39.07	+2.20	39.58
9	16	435404	KRAJEWSKA Daria	1998		48.48	50.83	1:39.31	+2.44	41.39
10	27	56758	KUCERA Elisabeth	2006		48.91	50.53	1:39.44	+2.57	42.37
11	4	56611	PFURTSCHELLER Valentina	2002		47.21	52.35	1:39.56	+2.69	43.27
12	18	56525	TREICHL Lena	2000		48.39	51.26	1:39.65	+2.78	43.95
13	14	56566	GROSS Julia	2001		48.65	51.33	1:39.98	+3.11	46.44
14	34	56762	BINNA Leonie	2006		48.74	51.30	1:40.04	+3.17	46.89
15	19	56526	HERZ Celina	2000		48.74	51.34	1:40.08	+3.21	47.19
16	23	56677	DRAGASCHNIG Sarah	2004		49.32	51.38	1:40.70	+3.83	51.86
17	31	45439	MAHON Sophie	2001		49.04	51.79	1:40.83	+3.96	52.84
18	25	56748	POELL Simona	2006		49.90	51.11	1:41.01	+4.14	54.20
19	26	6296874	FEICHTER Hannah	2006		49.56	51.52	1:41.08	+4.21	54.73
20	29	56751	HUBER Sarah	2006		49.72	51.42	1:41.14	+4.27	55.18
21	24	6296113	HOLZER Thea	2003		49.75	51.47	1:41.22	+4.35	55.78
22	39	56800	DALLHAMMER Angelika	2007		49.79	52.69	1:42.48	+5.61	65.28
23	38	56690	EDER Annalena	2004		50.27	53.06	1:43.33	+6.46	71.68
24	41	56780	MENTIL Emelie	2006		51.09	52.82	1:43.91	+7.04	76.05
25	46	56802	OSCHMAUTZ Emma	2007		51.95	53.94	1:45.89	+9.02	90.97
26	44	207045	LORENZ Ottilie	2006		51.99	54.67	1:46.66	+9.79	96.78
27	37	6296872	TASCHLER Norah	2006		53.04	55.37	1:48.41	+11.54	109.96
28	50	565557	PIRIH Metka	2007		58.70	1:00.32	1:59.02	+22.15	189.92
29	49	565556	PIRIH Manca	2007		1:00.42	1:03.09	2:03.51	+26.64	223.76
Did Not Finish 2nd Run										
48		56823	KRIECHBAUM Nella	2007						
42		6297122	SPIZZICA Alice	2007						
35		175050	BERTHELSEN Nuunu Chemnitz	1996						
28		56779	EISNER Elisa	2006						
21		325161	CHOI Taehee	2005						
20		225709	BRUCE Abi	2000						
17		6296077	KOSTNER Chayenne	2003						
15		185447	KORPIO Nella	1999						
12		56672	ACKER Filippa	2004						
7		56720	BENTZ Paulina	2005						
Did Not Finish 1st Run										
47		56754	HAILLER Lea	2006						
43		108602	KLOTZ Saffron	2004						
40		56756	SEIS Lara Marie	2006						
36		6296574	DE NARDIN Maria	2005						
33		755058	ATANASOVSKA Jana	2006						
32		56757	TSCHACH Stella Terese	2006						
30		56769	HALLER Marie Therese	2006						
22		6296279	PELLIZZARI Ellis	2004						
8		56722	HUNDEGGER Nadine	2005						
3		56548	WALDAUF Sophia	2001						
Did Not Start 1st Run										
45		405176	RUE DE Isabelle	2000						

